



**FISHER**  
ARCHITECTURE



## RELEVANT PROJECT EXPERIENCE

### WICOMICO COUNTY STATES ATTORNEY OFFICE & CHILD ADVOCACY CENTER SALISBURY, MARYLAND

**Project Owner:**

Office of State's Attorney  
Mathew Maciarelo

**General Contractor:**

Delmarva Veteran Builders

**Construction Cost:**

\$ 2,500,000

**Project Scope:**

Architectural  
Interior Design  
M.E.P.  
Security & Alarm

**Project Size:**

18,000 s.f.

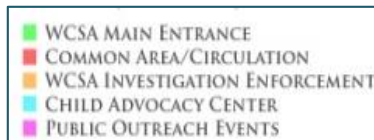
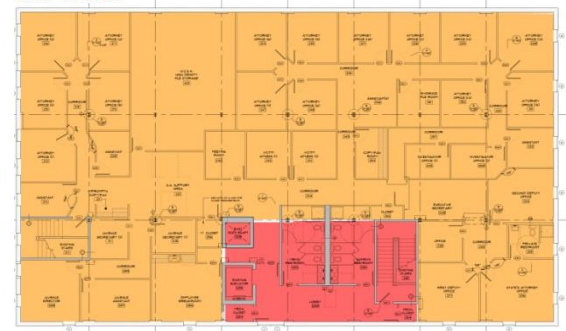
*2014 Excellence in Construction Award*

Fisher Architecture was hired initially by the County to aid in producing a programming analysis for its current and future space needs. The States Attorney's office needed to relocate and expand. It included offices for the fifteen attorneys, administrative assistants for each attorney, interrogation areas for the Sheriff's office investigation division, and areas for victim interviews. Also included within Fisher's services was the programming and design of the Child Advocacy Center. This space was for the investigation and interrogation of crimes against children. Within the design, the level of security between officers, felons, children, and attorneys had to be carefully considered at all times.

1ST FLOOR



2ND FLOOR



108 PINE BLUFF ROAD  
SALISBURY, MD 21801  
(410) 742-0238 (OFFICE)  
(888) 879-7149 (FAX)  
FISHERARCHITECTURE.COM